



L'ECCESSO



MINI BROCHURE
2022

INSPIRATION

“L’Eccesso takes its first steps from the desire to restore value and dignity to individual slabs of natural material which over time, as happens in every stonemason’s warehouse, remain in excess at the end of other interior design projects.”

“L’Eccesso muove i suoi primi passi dalla volontà di restituire valore e dignità a singole lastre di materiale naturale che nel tempo, come succede in ogni magazzino di marmista, rimangono in eccesso alla fine di altri progetti di arredo d’interni.”



L'ECCESSO

The story of the L’Eccesso collection through ambient solutions, evocative scenarios, and technical insights. A volume dedicated to contemporary stone furniture, linked to the theme of emotions and sustainability.

Il racconto della collezione L’Eccesso attraverso soluzioni ambientali, scenari evocativi e approfondimenti tecnici. Un volume dedicato all’arredo contemporaneo in pietra, legato al tema delle emozioni e della sostenibilità.

DINING TABLES



DINING TABLE 01



DINING TABLE 02



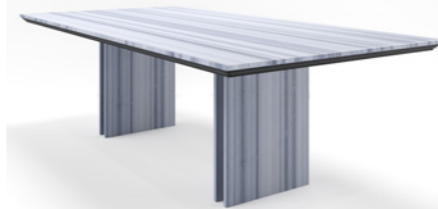
DINING TABLE 03



DINING TABLE 04



DINING TABLE 05



DINING TABLE 06



DINING TABLE 07

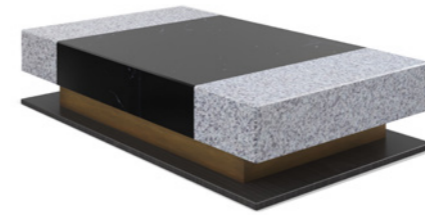


DINING TABLE 08



DINING TABLE 09

COFFEE TABLES



COFFEE TABLE 01



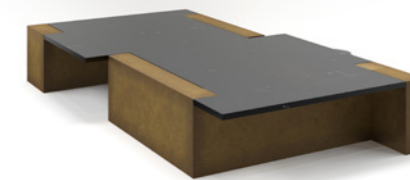
COFFEE TABLE 02



COFFEE TABLE 03



COFFEE TABLE 04



COFFEE TABLE 05

SIDE TABLES



SIDE TABLE 01



SIDE TABLE 02



SIDE TABLE 03



SIDE TABLE 04

CONSOLLES



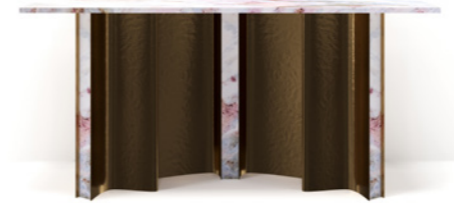
CONSOLLE 01



CONSOLLE 02



CONSOLLE 03



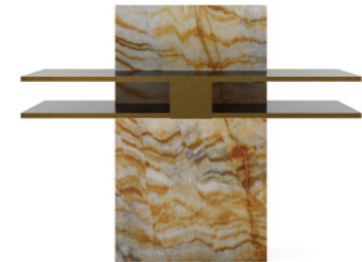
CONSOLLE 04



CONSOLLE 05



CONSOLLE 06



CONSOLLE 07



CONSOLLE 08

ABOUT US

Since 1934, Simeg has been transforming stone materials into custom-made products for indoor and outdoor use. Simeg adopts “Sustainability” as an entrepreneurial choice out of love for the environment and for its territory.

Dal 1934 Simeg trasforma i materiali lapidei in prodotti su misura per interni ed esterni.

Simeg adotta la “Sostenibilità” come scelta imprenditoriale per amore dell’ambiente e del territorio.



Simeg Srl

Via Evangelista Torricelli, 5, 62027
San Severino Marche (MC) - Italia
T. +39 0733 645094

E. simeg@simegmarmi.com
<https://www.simegmarmi.com/>

In Collaborazione con:

Metallia

Passo del Bidollo - Via Abruzzo 62014
Corridonia (MC)
T. +39 0733 203820

E. info@metallialavorazioni.it
<https://www.metallialavorazioni.it/>

Project Leading: Carlo Rotini

Collection design by Paolo Ciacci - Design Interiore

Art direction & Photography: Shilpa Srinivas

Ci puoi seguire sui nostri socials:

Instagram:

Facebook:

